

# Production Display Board (Industrial Production and Reporting Systems)

## Core module features:

- Measure production
- Cycle time based productivity display to show Real time Target, Actual, Gap and Efficiency
- Hourly production data for the line
- Set up the unit with Shift start and end times and Shift breaks
- Download production data live. Download CSV and import to MSEXCEL or other format to parse data.
- Multiple screens for quick display of Shop floor data at various levels - for example screens at Plant Manager / Supervisor cabin to display line data for each line
- Communicate key information to employees and visitors
- Keep employees informed about important announcements, such as safety and other messages
- Highlight corporate and individual accolades, such as the Employee of the Month
- Provide recognition to employees on their birthday or anniversary
- Display emergency alert messages
- Extend your content to break rooms, cafeterias and other common areas.



## Core Module Screen Shots

Line1 Current Shift 111 Shift A		Monday 2011-03-28	Time 07:22:32
Plan	Actual		
82	14		
Gap	Efficiency %		
68	17		

Line 12 Current Custom Hourly Chart 1			07:23:24 2011-03-28
6:00	7:00	8:00	
60/0 0%	60/14 23%	60/0 0%	
9:00	10:00	11:00	
40/0 0%	50/0 0%	45/0 0%	
12:00	13:00		
60/0 0%	60/0 0%		

### Optional – Real time Current Hour Screen

Line1 Hour Board	Monday	Time
	2011-03-28	07:25:27
Plan	Actual	
25	14	
Gap	Efficiency %	
11	56.0	

### Summary Boards for Multiple Lines (Shift / Hourly):

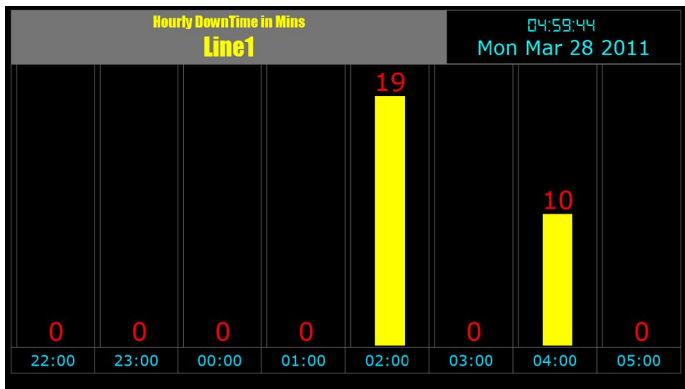
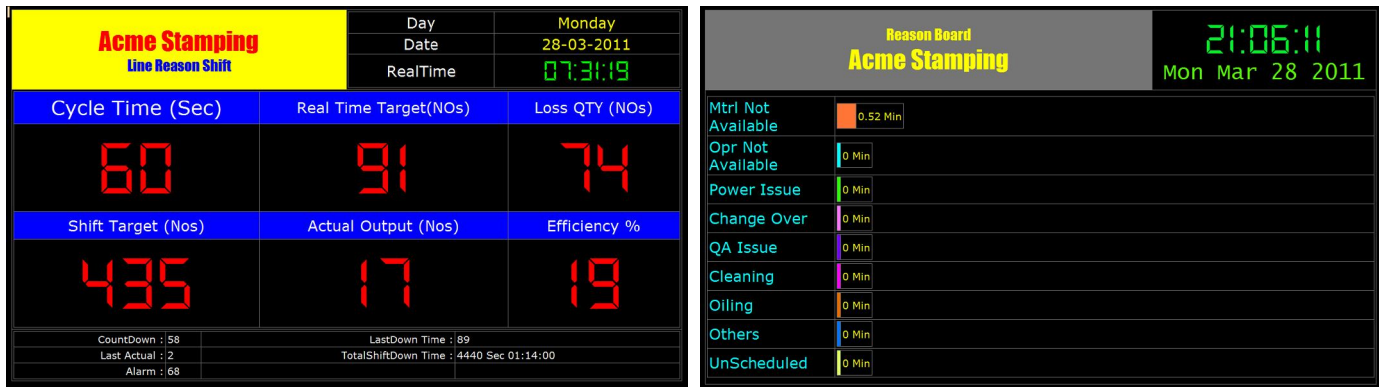
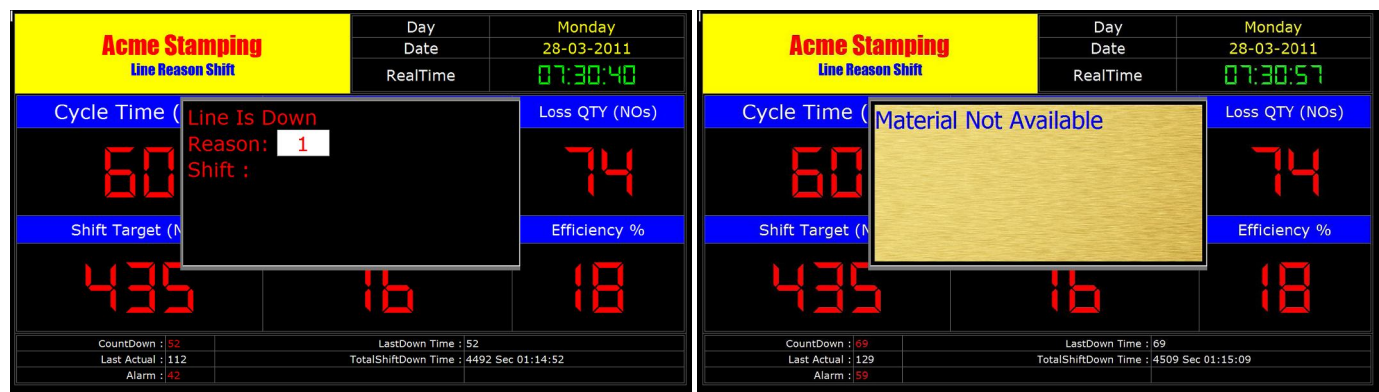
All Lines Line Summary Shift 20:34:29	Plan	Actual	Gap	Eff	Current Hour Summary Line Summary Shift 20:34:56	1	2	3	4	5	6	7	8
Line1	84	14	70	16.7	Line1	60 0 60 %	60 14 46 23.3 %	60 0 60 %	40 0 40 %	50 0 50 %	45 0 45 %	60 0 60 %	60 0 60 %
Line2	84	14	70	16.7	Line2	60 0 60 %	60 14 46 23.3 %	60 0 60 %	40 0 40 %	50 0 50 %	45 0 45 %	60 0 60 %	60 0 60 %
Line3	84	14	70	16.7	Line3	60 0 60 %	60 14 46 23.3 %	60 0 60 %	40 0 40 %	50 0 50 %	45 0 45 %	60 0 60 %	60 0 60 %
Line4	84	14	70	16.7		60 0 60 %	60 14 46 23.3 %	60 0 60 %	40 0 40 %	50 0 50 %	45 0 45 %	60 0 60 %	60 0 60 %

### Add on Modules:

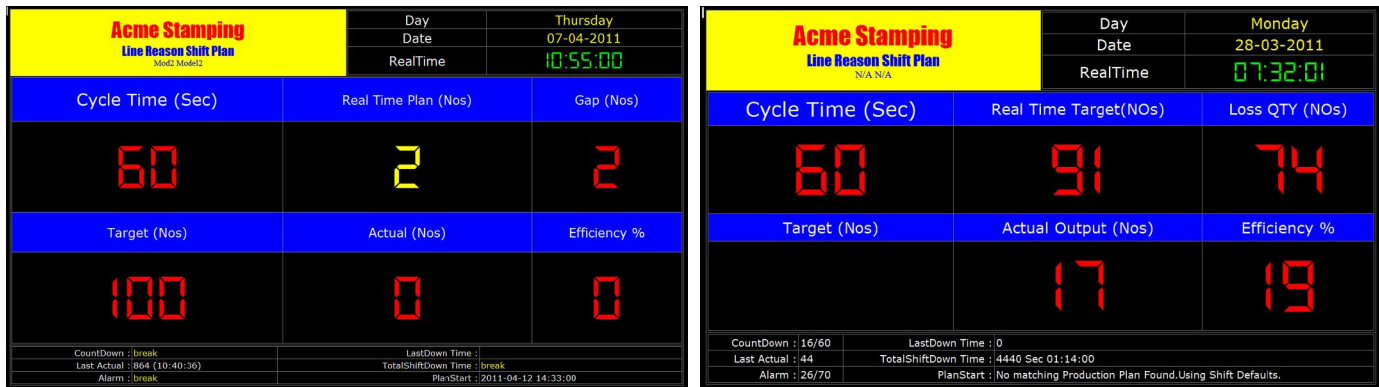
- IPR-1 - Alarm Board. Allows you to set an audible alarm that will go off when no actual is received.

Alarm Board Acme Stamping		Day	Monday
		Date	28-03-2011
		RealTime	07:26:44
Cycle Time (Sec)		Real Time Target(NOs)	
60		86	
Shift Target (Nos)		Loss QTY (NOs)	
435		71	
Shift Target (Nos)		Actual Output (Nos)	
435		15	
		Efficiency %	
		17	
CountDown : 47/60		LastDown Time : 180	
Last Actual : 13		TotalShiftDown Time : 4260 Sec	
Alarm : 57/70		TotalShiftDown Time in HH:MM:SS: 01:11:00	

- IPR-2 - Line down Board with Alarm - This board allows you to register a reason for line down. The board will prompt for a reason when the alarm duration is completed without any product being produced.



- IPR-3 Line down Alarm Board with scheduling. This board allows you to setup a production plan that lets you define multiple product models for the same line in a shift. Each model can have its own cycle time and alarm time.



- IPR-4 – Scheduling feature > like Show calendars of upcoming company events.
- IPR-5 - Broadcast training videos, safety procedures, and messages from management
- IPR-6 - RSS feeds from the Internet